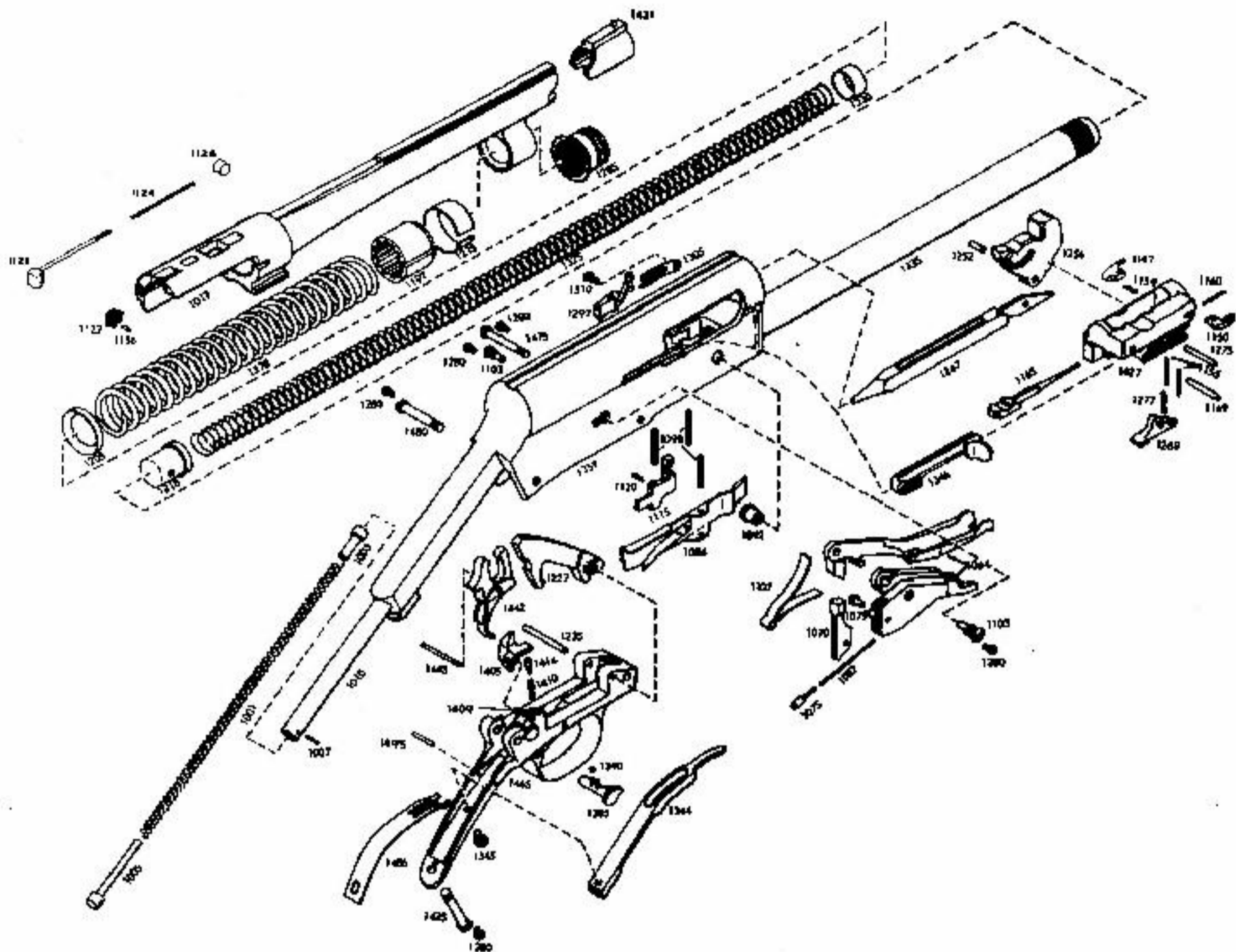


# Browning Automatic-5 Shotgun



**1001** Action Spring  
**1003** Action Spring Follower  
**1005** Action Spring Plug  
**1007** Action Spring Plug Pin  
**1010** Action Spring Tube  
**1017** Barrel Extension  
**1027** Breech Block  
**1070** Carrier Dog  
**1075** Carrier Dog Follower  
**1077** Carrier Dog Follower  
**1079** Carrier Dog Pin  
**1080** Carrier Dog Pin  
**1082** Carrier Dog Spring  
**1083** Carrier Dog Spring  
**1086** Carrier Latch Assembly  
**1092** Carrier Latch Button  
**1098** Cartridge Stop Pin  
**1103** Carrier Screw  
**1107** Carrier Spring Trigger Plate  
**1115** Cartridge Stop  
**1120** Cartridge Stop Spring  
**1122** Ejector & Ejector Rod  
**1124** Ejector Spring  
**1126** Ejector Spring Retainer  
**1127** Ejector—12 & Prewar 16  
**1136** Ejector Rivet

**1147** Extractor, Left  
**1150** Extractor, Right  
**1155** Extractor Pin, Left & Right  
**1159** Extractor Spring, Left  
**1160** Extractor Spring, Right Hand  
**1165** Firing Pin  
**1169** Firing Pin Stop Pin  
**1197** Friction Piece—Bronze  
**1205** Friction Ring  
**1215** Friction Spring  
**1227** Hammer Assembly  
**1235** Hammer Pin  
**1247** Link  
**1252** Link Pin  
**1256** Locking Block  
**1269** Locking Block Latch 2-Piece Carrier  
**1275** Locking Block Latch Pin  
**1277** Locking Block Latch Spring  
**1280** Lock Screws  
**1285** Magazine Cap  
**1297** Magazine Cutoff  
**1305** Magazine Cutoff Spring  
**1310** Magazine Cutoff Spring Screw  
**1318** Magazine Follower

**1325** Magazine Spring  
**1330** Magazine Spring Retainer  
**1335** Magazine Tube—5-Shot  
**1344** Mainspring  
**1345** Mainspring Screw  
**1346** Operating Handle  
**1359** Receiver  
**1378** Recoil Spring  
**1385** Safety Crossbolt, Right  
**1390** Safety Ball  
**1405** Safety Sear  
**1409** Safety Sear Pin  
**1410** Safety Sear Spring  
**1414** Safety Sear Spring Follower  
**1431** Sight Bead  
**1435** Tang Screw for Pistol Grip Stock  
**1442** Trigger for Crossbolt Safety  
**1445** Trigger Pin  
**1465** Trigger Plate for Crossbolt Safety  
**1475** Trigger Plate Screw  
**1480** Trigger Plate Screw, Rear  
**1486** Trigger Spr.—Pin Retained  
**1495** Trigger Spr. Retaining Pin  
**1499** Magazine Adaptor—3-Shot