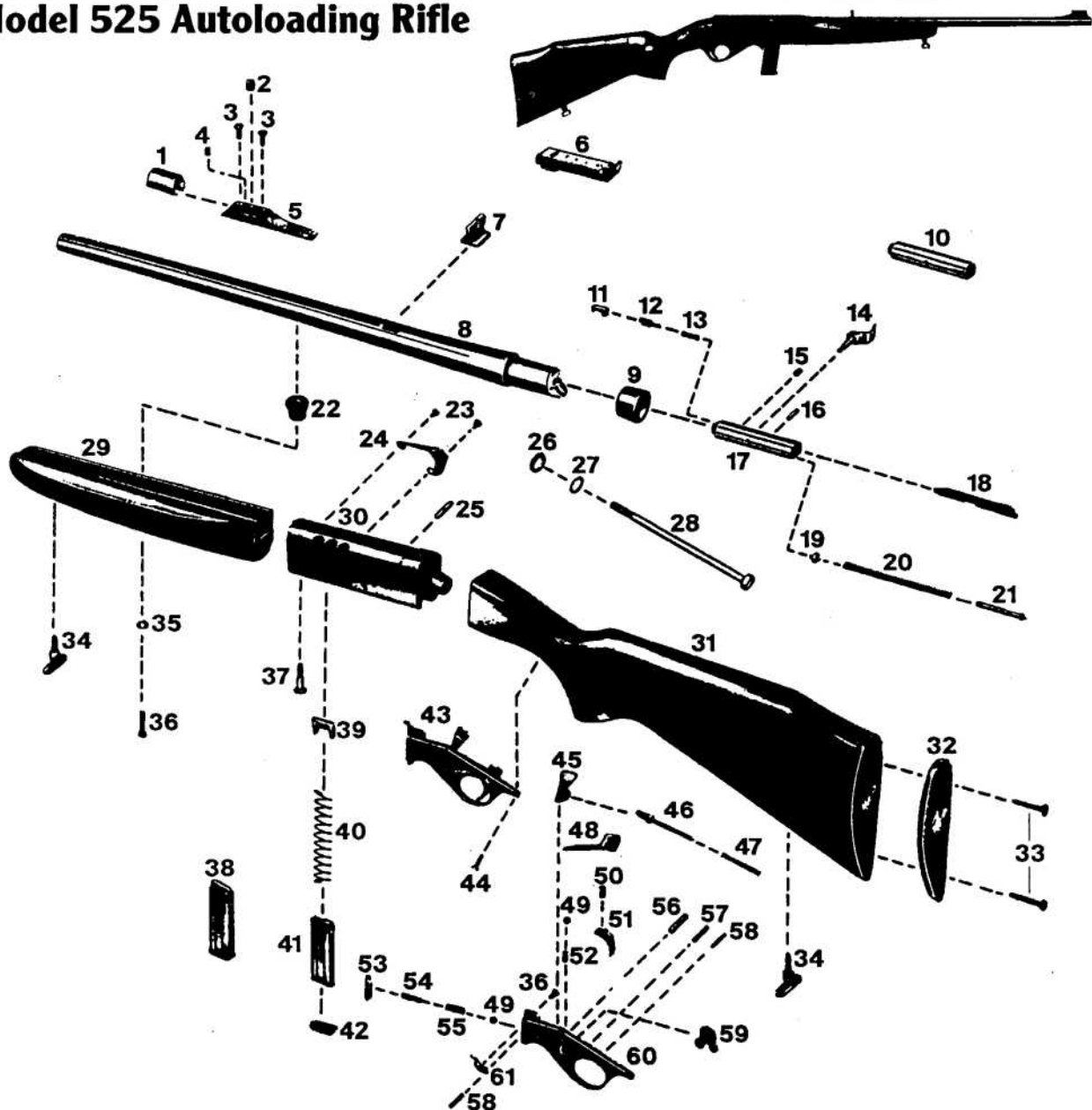


Model 525 Autoloading Rifle



KEY

- | | | |
|-----------------------------|--------------------------------|--|
| 1 Front Sight Hood | 20 Recoil Spring | 41 Magazine Housing |
| 2 Front Sight Bead | 21 Spring Bolt | 42 Magazine Bottom |
| 3 Front Sight Base Screws | 22 Barrel Stud | 43 Trigger Guard with Trigger Assembly |
| 4 Safety Plug | 23 Pan Head Screws | 44 Raised Countersunk Head Screw |
| 5 Front Sight Base | 24 Deflector | 45 Hammer |
| 6 Tangent Rear Sight | 25 Trigger Guard Retaining Pin | 46 Hammer Spring Bolt |
| 7 Folding Leaf Rear Sight | 26 Washer | 47 Hammer Spring |
| 8 Barrel | 27 Lock Washer | 48 Catch Link |
| 9 Intermediate Ring | 28 Stock Assembly Screw | 49 Steel Balls |
| 10 Bolt Assembly, Complete | 29 Forend | 50 Trigger Spring |
| 11 Extractor | 30 Receiver | 51 Trigger |
| 12 Spring Bolt | 31 Stock with Partial Fittings | 52 Safety Spring |
| 13 Extractor Spring | 32 Buttplate | 53 Magazine Retainer |
| 14 Bolt Handle | 33 Buttplate Screws | 54 Magazine Retaining Spring, Large |
| 15 Threaded Pin | 34 Sling Swivels | 55 Magazine Retaining Spring, Small |
| 16 Firing Pin Retaining Pin | 35 Bushing | 56 Hammer Pin |
| 17 Bolt Body | 36 Cheese Head Screws | 57 Catch Link Pin |
| 18 Firing Pin | 37 Barrel Assembly Screw | 58 Cylindrical Pins |
| 19 Catch Bolt | 38 Magazine Assembly, Complete | 59 Safety |
| | 39 Magazine Follower | 60 Trigger Guard |
| | 40 Magazine Follower Spring | 61 Ejector |